

**REACH24H
CONSULTING
GROUP**

REACH24H Consulting Group is a sub-company of Centre Testing International Corporation (CTI), a publicly traded company on the Chinese Stock Exchange. CTI is China's leading product testing, inspection, certification, and consulting firm, providing comprehensive services for virtually all consumer products.

REACH24H Group provides product Stewardship & regulatory compliance service for global customers from its three offices – Ireland, Canada and China, assisting global companies to comply with global chemical regulations including the EU REACH, China new chemical substance notification, Global GHS, USA TSCA, etc. Our objective is to facilitate the most efficient and cost-effective access to the marketplace for our clients' products through utilising our strong commercial experience and technical expertise in the chemical industry.

REACH24H Europe

REACH24H China

REACH24H North America

International Chemical Regulation REACH Workshop, Asia 2012 Hangzhou, China, 2012

Honored Guests :

- European Chemicals Agency (ECHA)
- Human Environment and Transport Inspectorate, Ministry of Infrastructure and the Environment, Netherlands
- Chemical Registration Center, Ministry of Environmental Protection (CRC-MEP)
- National Registration Center for Chemicals (NRCC)

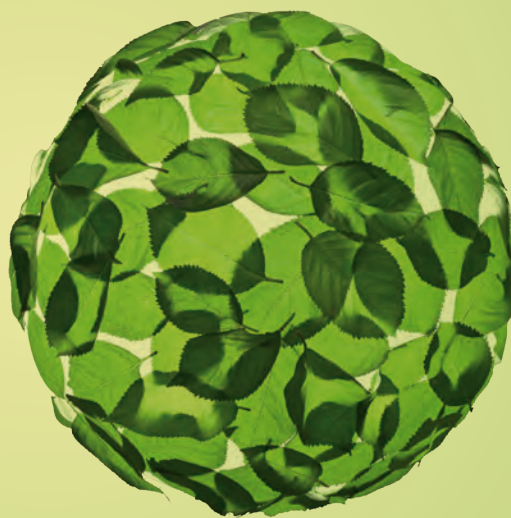
Hosted by :

REACH24H Consulting Group, China

Hangzhou China
2012.11.29 - 2012.11.30

Proudly sponsored by:

Huntingdon life sciences
Chemspec Europe
YGYM Translation Service Co., Ltd.



Website:

<http://www.REACH24h.com/workshop2012>

Focus intensely on global chemical regulatory innovation process

Approach to the most authoritative interpretation of regulatory trends

In-depth interpretation upon REACH implementation coming in the years ahead

Great opportunity to explore your business opportunities behind chemical regulations compliance



About Workshop

As one of the most prestigious workshops in the chemical & petrochemical industry, the 4th International Chemical Regulation REACH Workshop will be held on November 29-30, 2012 in Hangzhou, China. This annual REACH Workshop has emerged over the last 3 years as a uniquely valuable chemical industry meeting. The workshop brings together the most senior experts from government, worldwide chemical industrial organizations and global chemical companies.

The workshop focuses on current international chemical regulatory trends and how companies can benefit from effective compliance strategies. With topics ranging from differing regulatory authority approaches to differing requirements for manufacturers and importers, this conference will offer the latest global regulatory information and enforcement trends. Senior chemical testing experts will elaborate on scientific evaluation of substance data requirements to facilitate effective reduction of compliance costs. A proposal for optimum design of supply chain compliance will facilitate decision-making on product risk control and cross-border business interactions.

Next year, 2013, is an important year for all actors involved in EU chemical trading. How can you prepare appropriately for the challenges? How can you reduce TBT risk and ensure regional compliance? How can you seize the initiative and achieve success in the ever-changing international market?

The 4th International Chemical Regulation REACH Workshop will provide these answers!

International
Chemical Regulation
REACH Workshop,
Asia 2012 Hangzhou,
China, 2012

Key topics and speakers include

1. How to prepare for the 2013 registration deadline under REACH

— **Petteri Mäkelä**, International Affairs & External Communications Unit, ECHA

2. Live report on regulatory enforcement of EU REACH and CLP

— **Chiel Bovenkerk**, Specialist inspector of inspections on REACH-chemicals, Netherlands

3. China Regulatory News & Database - ChemLinked.com

— **Jim Wei**, the director of REACH24H CONSULTING GROUP CHINA

4. Case study: Registration data fees under REACH

— **Helen Ye**, B.D. Manager of REACH24H Consulting Group

5. Understanding MEP No.7: status and process of “Measures on the Environmental Administration of New Chemical Substance in China”

— **Nie Jinglei**, Director of Chemical Registration Center, Ministry of Environmental Protection (CRC-MEP)

6. Test requirement on new chemical substance notification and case study

— **Tang Baohua**, Senior engineer of Shenyang Research Institute of Chemical Industry

7. Points of focus in technical assessment of new chemical notification in China

— **Cai Leiming, PhD**, Institute of Quality and Standard of Agro-products, ZAAS

8. Introduction to risk assessment progress on new chemical substance notification in China

— **Wang Hong**, Associate Researcher in Key Laboratory of Ecological Effect and Risk Assessment of Chemicals, MEP

9. How to plan an efficient new chemical substance notification

— **Tommy Kong**, Expert of REACH24H Consulting Group

10. GHS implementation in China

— **Luo Qiming**, Ministry of Industry and Information Technology of PRC

11. Introduction to the new version of “Measures on Hazardous Substances Registration”

— **Guo Zongzhou**, National Registration Center for Chemicals – SAWS

12. Law enforcement supervision of dangerous goods in waterway transportation

— **Ge Yuying**, Senior Engineer of Dalian Dangerous Goods Transportation Research Center

13. Korea REACH and current activities

— **Sanghee Park**, Managing Director of Chemtopia Co. Ltd, Korea

14. Solutions for coping with regional differences in GHS

— **Christine Lepisto**, The Wercs Ltd.

15. Requirements and Solutions for TSCA Compliance

— **Lily Hou, PhD, CHMM**, Regulatory Compliance Specialist of ChemADVISOR, Inc

16. Case study: Experiences and perspectives from Dupont

— **Sandy Ma**, Dupont China

17. Extended safety data sheets: managing and understanding Exposure scenarios

— **Selerant Corp**



Agenda

International Chemical Regulation REACH Workshop, Asia 2012 – Day One
November 29, 2012

| | | |
|--------------------|---|--|
| 12:00-13:00 | Registration | |
| 13:00-13:15 | Welcome and Introduction | |
| 13:15-14:00 | How to prepare for the 2013 registration deadline under REACH | Petteri Mäkelä , International Affairs & External Communications Unit, ECHA |
| 14:00-14:45 | Enforcement of REACH and GHS in EU and the Netherlands | Chiel Bovenkerk , Specialist inspector of inspections on REACH-chemicals, Netherlands |
| 14:45-15:20 | Case study: Registration data fees under REACH | Helen Ye, B.D. Manager of REACH24H Consulting Group |
| 15:20-15:50 | Afternoon networking break | |
| 15:50-16:20 | Korea REACH and current activities | 김기영 , The owner of Chemtopia Co. Ltd. |
| 16:20-16:50 | The Experts Show In this session, delegates have the opportunity for a Q&A session with speakers on EU REACH | |
| 16:50-17:20 | Requirements and Solutions for TSCA Compliance | Lily Hou , PhD, CHMM, Regulatory Compliance Specialist of ChemADVISOR, Inc |
| 17:20-17:35 | Special session for sponsor | Huntingdon life sciences |
| 17:35 | End of day one | |
| 18:00 | Dinner reception | |

Agenda



International Chemical Regulation REACH Workshop, Asia 2012 – Day Two November 30, 2012

| 8:00-9:00 Registration and Morning Refreshments | | |
|---|--|---|
| 9:00-9:30 | Understanding MEP No.7: status and process of “Measures on the Environmental Administration of New Chemical Substance in China” | Nie Jinglei , Director of CRC-MEP, Chemical Registration Center, Ministry of Environmental Protection (CRC-MEP) |
| 9:30-10:00 | Test requirement on new chemical substance notification and case study | Tang Baohua, Shenyang Research Institute of Chemical Industry (certified laboratory for new chemical substance notification in China) |
| 10:00-10:30 | Morning networking break | |
| 10:30-11:00 | Points of focus in technical assessment of new chemical notification in China | Cai Leiming, PhD Institute of Quality and Standard of Agro-products, ZAAS |
| 11:00-11:30 | Introduction to risk assessment progress on new chemical substance notification in China | Wang Hong Associate Researcher in Key Laboratory of Ecological Effect and Risk Assessment of Chemicals, MEP |
| 11:30-12:00 | How to plan an efficient new chemical substance notification | Tommy Kong Senior expert of REACH24H Consulting Group |
| 12:00-12:30 | The Experts Show In this session, delegates have the opportunity for a Q&A session with speakers on China new chemical substance notification | |
| 12:30 | Lunch networking break | |
| 13:30-14:00 | GHS implementation in China | Luo Qiming, Ministry of Industry and Information Technology of PRC |
| 14:00-14:30 | Introduction to the new version of “Measures on Hazardous Substances Registration” | Guo Zongzhou National Registration Center for Chemicals – SAWS |
| 14:30-15:00 | Law enforcement supervision of dangerous goods in waterway transportation | Ge Yuying Dalian Dangerous Goods Transportation Research Center |
| 15:00-15:25 | Afternoon networking break | |
| 15:25-15:55 | China Regulatory News & Database - ChemLinked.com | Jim Wei, the director of REACH24H CONSULTING GROUP |
| 15:55-16:25 | Solutions for coping with regional differences in GHS | Christine Lepisto, The Wercs Ltd. |
| 16:25-16:55 | Case study: Experiences and perspectives from Dupont | Sandy Ma, Dupont China |
| 16:55-17:15 | Extended safety data sheets: managing and understanding Exposure scenarios | Selerant Corp |
| 17:15-17:30 | The Experts Show: In this session, delegates have the opportunity for a Q&A session with speakers on China GHS | |
| 17:30 | End of Workshop | |

REACH24H China

REACH24H
CONSULTING
GROUP



REACH24H Consulting Group

REACH24H Group provides product Stewardship & regulatory compliance service for global customers from its three offices – Ireland, Canada and China, assisting global companies to comply with global chemical regulations including the EU REACH, China new chemical substance notification, Global GHS, USA TSCA, etc.

REACH24H has great cooperation with Chinese local authorities National Registration Center for Chemicals, Chemical Registration Center of Ministry of Environmental Protection, and successfully provide consulting on China new chemical substance notification, China GHS and other related regulations for global companies.

REACH24H Consulting Group is also the sub-company of Centre Testing International Corporation (CTI), a publicly traded company on the Chinese Stock Exchange (300012.SZ). CTI is China's leading product testing, inspection, certification, and consulting firm, providing comprehensive services for virtually all consumer products.

Workshop Venue



Wyndham Grand Plaza Royale West Lake Hangzhou

The Wyndham Grand Plaza Royale Hangzhou Hotel is located at the North East corner of the scenic West Lake, facing the local and provincial Government offices and administration, and in the hub of Hangzhou's Business District. The picturesque West Lake is only a few steps away. The Wyndham Grand Plaza Royale West Lake Hangzhou Hotel is the perfect place to create long-lasting memories for your business, conference or leisure trip.

Address: No. 555 Fengqi Road, Hangzhou, Zhejiang, 310006, P.R. China.

Phone: +86 571 8761 6888

Fax: +86 571 8783 6666



Hotel Reservations

Please send reservation enquiries to

Ms. Lilian Wang

Email: lilian.wang@reach24h.com

An accommodation booking form will be sent with your joining instructions on receipt of your completed conference registration form.

Sponsorship opportunities



Golden Package 16,000 USD (including VAT)

- Proudly sponsor the workshop as “co-organizer” and present on workshop website, back board, direction board, brochure and other promotion materials
- Address at the opening ceremony
- Introduction of sponsor by host
- 30 minutes’ speech during the workshop (reviewed by committee before the conference)
- Sponsor demonstration with video/slides during the networking break (reviewed by committee before the conference)
- 4 free pass for the workshop
- Set up a booth in reception area with priority
- Roll up banner (Poster) of sponsor at reception area (provided by sponsor)
- Sponsor’s promotion materials collected on workshop bag (provided by sponsor)
- Sponsor name and logo presented on workshop badge (The card)
- 2 special reports of sponsor on workshop website
- Website link for 1 year

Silver Package 8,000 USD (including VAT)

- Proudly sponsor the workshop as “sponsor” and present on workshop website, back board, direction board, brochure and other promotion materials
- Brief introduction of sponsor by host
- 15 minutes’ speech during the workshop (reviewed by committee before the conference)
- Sponsor demonstration with video/slides during the networking break (reviewed by committee before the conference)
- 2 free pass for the workshop
- Set up a booth in reception area
- Roll up banner (Poster) of sponsor at reception area (provided by sponsor)
- Sponsor’s promotion materials collected on workshop bag (provided by sponsor)
- Sponsor name and logo presented on workshop badge (The card)
- Website link for 1 year



Bronze Package 3,200 USD (including VAT)

- Proudly sponsor the workshop as “sponsor” and present on workshop website, back board, brochure and other workshop promotion materials
- Brief introduction of sponsor by host
- Special sponsor for tea breaks, and roll up 2 banner (poster) of sponsor at the tea break area (provided by sponsor)
- Sponsor demonstration with video/slides during the networking break (reviewed by committee before the conference)
- Set promotion materials at reception area
- 1 free pass for the workshop
- Sponsor’s promotion materials collected on workshop bag (provided by sponsor)
- Website link for 1 year

Special sponsor for dinner reception 6,500 USD (including VAT)

- Proudly sponsor the workshop as “sponsor” and present on workshop website, back board, direction board of dinner reception, brochure and other promotion materials
- Introduction of sponsor by host
- Sponsor demonstration with video/slides during the networking break (reviewed by committee before the conference)
- Address in the dinner reception
- Roll up 2 banner (poster) of sponsor at the entrance of dinner area (provided by sponsor)

- 1 permission for main table during the dinner
- 2 free pass for the workshop
- Sponsor name and logo presented on workshop agenda, dinner table and poster of dinner area
- Sponsor’s promotion materials collected on workshop bag (provided by sponsor)
- 1 special reports of sponsor on workshop website
- Website link for 1 year



To order your specialized package please contact workshop committee directly

Ms. Lilian Wang
E-mail: lilian.wang@reach24h.com Tel: +86-571-87007516

International Chemical Regulation REACH Workshop, Asia 2012

Booking Form

| EASY WAYS TO REGISTER | | | |
|--|---|---|--------------------------|
| 1. Fax back on +86 571 87007566 | | | |
| 2. Alternatively please mail to: 6F, Building 2, Hesheng Trade Center, No. 327, Tianmushan Road, Hangzhou, China, 310023 | | | |
| 3. Email us at: lilian.wang@reach24h.com | | | |
| 4. Call us on: +86 571 8700 7516 | | | |
| 5. Register online at: www.reach24h.com/workshop2012/en/ | | | |
| DELEGATE DETAILS | | | |
| <input type="checkbox"/> YES! I wish to register for International Chemical Regulation REACH Workshop 2012 | | | |
| Company | | | |
| Address | | | |
| First name | | Family name | |
| Attention | <input type="checkbox"/> Dr/ <input type="checkbox"/> Mr/ <input type="checkbox"/> Ms | E-mail | |
| Department | | Job title | |
| Telephone | | Fax | |
| REGISTRATION FEE | | | ORDER |
| 700.00 USD | | | <input type="checkbox"/> |
| * Price cover lunches, refreshments, conference materials, networking reception and access to all areas | | | |
| * Considering the limited seats, we will charge another USD 80 if you pay in the workshop day to ensure your seat | | | |
| PAYMENT DETAILS (BANK INFORMATION) | | | |
| Bank Name: National Irish Bank | | Account Name: REACH24H Consulting Group | |
| Address: International House, 3 Harbourmaster | | Swift/BIC: DABAIE2D | |
| Place, IFSC, Dublin 1, Ireland | | USD Account: 70003808 | |
| Sort/Routing Code: 951783 | | IBAN: IE23DABA95178370003808 | |

Terms & Conditions

1. Payment Terms: Following completion and return of the registration form, full payment is required within 5 days from receipt of invoice. PLEASE NOTE: payment must be received prior to the conference date. A receipt will be issued on payment. Due to limited conference space, we advise early registration to avoid disappointment. Registration deadline: Nov. 15th, 2012. 2. Cancellation/Substitution: By completing and returning this form delegates are agreeing to be bound by the cancellation terms and conditions of registration. Substitutions can be made at any time, please inform us in writing prior to the conference. If you wish to cancel your registration please do so in writing. A full refund less 20% administration fee will be applicable 10 days before the conference. Cancellations received after this time will be liable for the full registration fee. 3. Copyright etc.: All intellectual property rights in all materials produced or distributed by the Host-REACH24H CONSULTING GROUP in connection with this event is expressly reserved and any unauthorized duplication, publication or distribution is prohibited. 4. Important notes: We point to the fact that e.g. travels arrangements, adequate insurance cover as well as possible visa procedures are on the delegate's own responsibility. While every effort will be made to adhere to the published program it may be necessary for reasons beyond the controls of the organizers or the sponsors to alter the content and timing of the program or the identity of the speakers without notice. Please check the website for the last version of the program. The cost of accommodation is not included in the registration fee. 5. Governing law: This Agreement shall be governed and construed in accordance with the law of P.R.China.

Signature (signature is mandatory)

| | |
|------------|-------|
| Signature: | Date: |
|------------|-------|

I agree to registration Terms & Conditions and register the workshop.

Hotel Reservation

YES! Please make this reservation for me

| | Hotel | Rates (single/double) | Number of rooms | Check in | Check out |
|--------------------------|--|--------------------------|--------------------|----------|-----------|
| <input type="checkbox"/> | Wyndham Grand Plaza Royale West Lake Hangzhou | 950 RMB | | | |

Thanks, I'll book another hotel by myself.

| | |
|-----------------|--|
| Special request | |
|-----------------|--|

Please note:

- All expenses should be paid by the delegate
- Reservation will be held until 18:00(hotel local time) on the day of arrival unless guaranteed by a credit card or deposit.
- Guaranteed reservations cancelled less than 24 hours prior to 18:00 on the day of arrival or no show will be subject to a one-night charge.
- Please note hotel's check-in time is 14:00 & check-out time is 12:00 noon, and please show your ID card upon Check-In.